



Robot[®]

Roomba[®]

Clean Base™ Automatic Dirt Disposal

For Roomba[®] i Series Robot Vacuums

Owner's Guide

Care and Maintenance

Care and Maintenance Instructions

To keep your dirt disposal running at peak performance, follow these care procedures:

Dock Part	Care Frequency	Replacement frequency
Bags	-	Bags should be replaced when prompted by the LED indicator/app
Charging Contacts IR Window	Once every month	-
Blower Cover inside canister	Once every month (remove debris from blower cover)	-

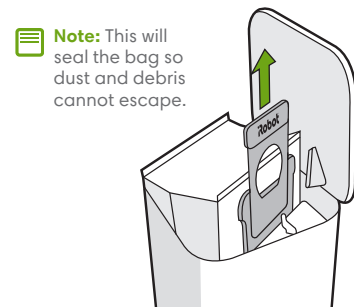
Note: iRobot manufactures various replacement parts and assemblies. If you think you need a replacement part, please contact iRobot Customer Care for more information.

Replacing the Bag

- 1 Lift up on the canister lid to open.



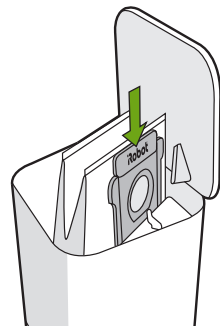
- 2 Pull up on the plastic card to remove the bag from the canister.



Note: This will seal the bag so dust and debris cannot escape.

- 3 Discard the used bag.

- 4 Install a new bag, sliding the plastic card into the guide rails.



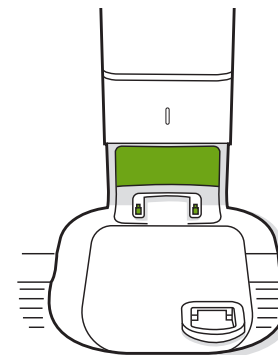
- 5 Press down on the lid making sure it is completely closed.

Note: To achieve optimal performance with your robot and automatic dirt disposal, clean and/or replace your robot's filter as needed.

Cleaning the IR Window and Charging Contacts

Inspect the sensors and charging contacts to make sure they are clear of debris. Wipe with a clean, dry cloth.

Note: Do not spray cleaning solution directly onto sensors or into sensor openings.



Removing Debris from Blower Cover

Inspect blower cover for any lint or debris built-up, and wipe with a clean dry cloth to remove.

